

WorkMan™

Introducing activeG's map-enabled work management solution

- work management
- field inspection tracking
- materials management
- inventory management
- compatible units builder
- project estimation
- GIS/GPS-ready

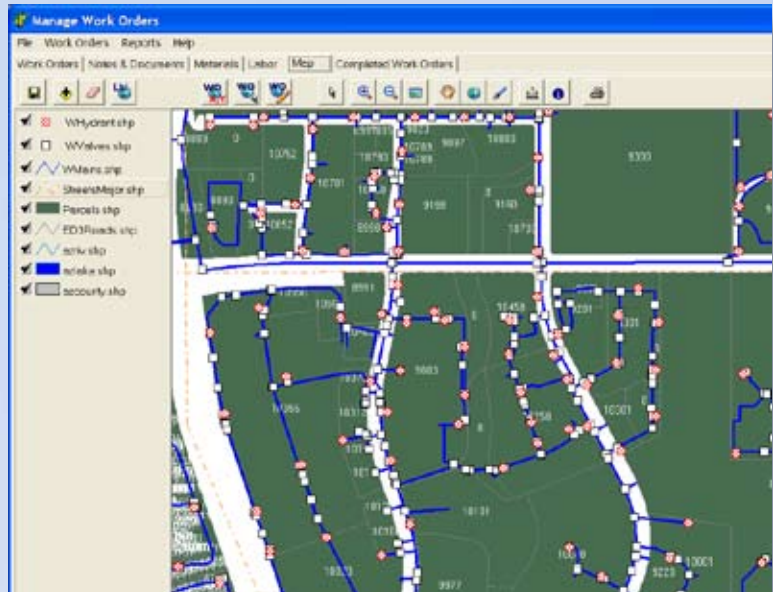


Introducing activeG's Work Management Solution WorkMan

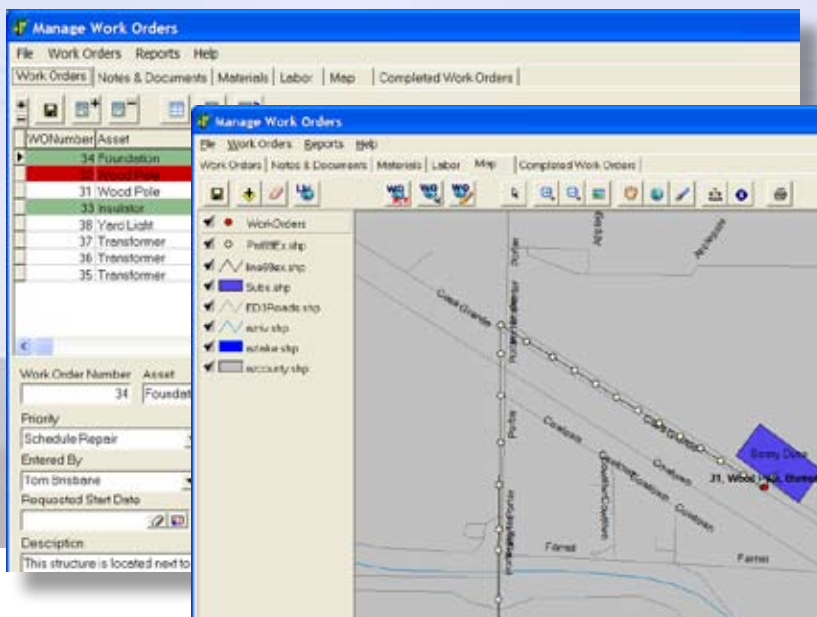
A stand-alone, map-based work management system, WorkMan is specially designed to support companies with large amounts of field assets. WorkMan offers a rich set of maintenance and inspection-oriented functionality to support a host of different industrial activities.

The difference is the map: WorkMan delivers functionality that most work management tools don't: *Full GIS and GPS integration.* With this exceptional GIS and GPS integration, WorkMan:

- Gives mobile field inspectors the ability to write a work order to any asset location visually.
- Lets you easily track the movement of fleet assets or work crews.
- Allows you build a visual record (aka. A map) of where your company's assets and equipment are located.



If you have a work management system today, you probably have a list of open work items. In WorkMan, you don't just see that list, you interact with a map of those outstanding work orders, closed items, or any other activity scheduled, completed, or in process in your company.



Don't have a GIS? No Problem! Even if you don't have your assets in an expensive GIS system, WorkMan builds that database of information for you through the day-to-day field inspection activities of your inspectors.

WorkMan comes with a host of integrated features that enable companies to quickly and easily manage their businesses, including:

Materials Management - WorkMan gives you the tools necessary to manage your growing list of materials and materials vendors. Keep track of items, attach schematics or photos, and assign vendors.

Inventory Management - Create stockrooms and storage locations, view inventory levels, track inventory movement, and perform materials requirement planning.

Demand Planning - With WorkMan, you can handle service parts planning activities. Improve the accuracy of material forecasts through better visibility into quantities, activities, and actual usage during maintenance and service calls.

Compatible Units Builder/Project Planner WorkMan provides you with the tools to design and build compatible units (CU) and robust project/job plans.

By creating compatible units in WorkMan, you create reusable templates that bundle materials, labor, instructions, and equipment required to perform a unit of work, such as the installation of a utility pole or transformer.

The Compatible Units Builder/Project Planner also includes various accounting features such as a reconciliation function; this function reconciles project/job planned time and materials with actual time and materials used.

By using WorkMan's Compatible Units Builder, your field crews will have instant access to the information they need for construction, maintenance and/or field inspection.

The screenshot displays three overlapping windows from the WorkMan software:

- Material Listing:** A table with columns: Component, Bom num, Mattype, Descript, Extdescrip, Descript 2, Stockcode, Compqty, and Uoi. It lists various components like connectors, insulators, and conductors.
- Job/Project Planning:** A window for planning a project. It includes fields for Title, Start Date, and End Date. Below is a 'Components' table listing items like MMD1, A1P1, TR3, TR1, and TR2 with their respective quantities.
- Master Material List:** A window showing details for a specific material (BOM B201, Material type TRANSFORMER). It includes a description, extended description, and product information such as manufacturer (WESTINGHOUSE Imp), phase, weight, height, width, depth, and temperature rating.

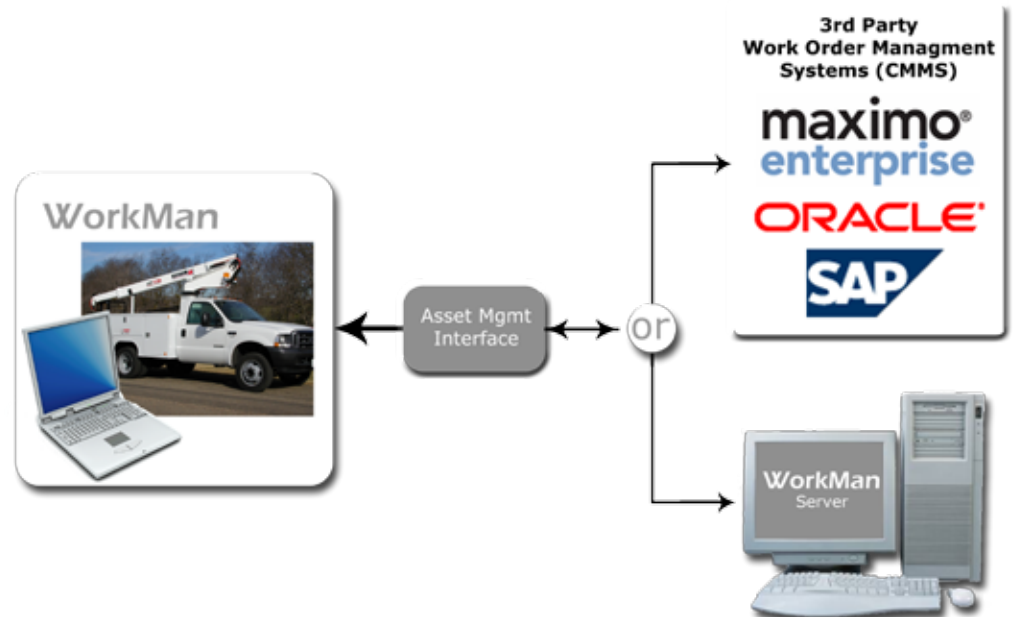
At the bottom of the screenshot, there is a small image of a transformer unit and a 'Close' button.

WorkMan Key Features

Key Feature	Description
Create, store and manage work orders	Full-featured, stand-alone work order management system with work order tracking, status, labor, and other related documents.
Interactive Maps	Displays interactive maps of field assets. Create work orders by clicking on the map, zoom/pan on locations, select objects for more info.
Automatic GPS Tracking	Displays the GPS location of the inspection vehicle, aircraft, or other mobile equipment.
Repair Prioritization	Assigns Repair Priority and Responsibility, using Reliability Centered Maintenance (RCM) practices.
Menu Configuration	Configurable maintenance menu.
Inspection Observations	Captures field repair actions and updates inspection records.
3rd Party Integration	Trigger creation of work orders in third-party work order management systems (Maximo, MP2, and more).
Customizable work order reports	Allows users to customize work order reports to meet their specific needs. Includes ability to display and print related maps with work order reports.
Work Order History	Click on the mapped asset or piece of equipment to see a history of work related to that asset.
Linked documents	View photos, drawings, and material lists to support work in the field
Manage Material Systems	Stores and manages item-level information, including vendors, unit of measure, description, item images, material type, categories, and more.
Compatible Units/Components	Builds and stores material/labor kit information for use in repeatable maintenance activities.
Jobs/Projects	Plan jobs or work projects and track planned vs. actual hours, labor and materials costs
View/Print	Materials, compatible units, job detail, project information, vendor lists, attachments (assembly drawings, images, diagrams, pictures, Movies)

activeG™, a global leader in spatial solutions, delivers a map-based application that maximizes the value of field inspections and performs outstanding work management capabilities. activeG's **WorkMan™** gets your company up and running quickly on a flexible system that delivers reliability-centered maintenance and materials management at a fraction of the cost of similar systems.

WorkMan gives your field inspection and maintenance teams the tools to be more efficient and more productive. Because WorkMan is map-based, it's intuitive and perfect for field use. Load a base map, plot your assets via GPS, and you're ready to create accurate work orders, ready to locate your open issues visually, and ready to start getting the benefits of reliability-centered maintenance.



Flexible Integration: The diagram above shows some of the implementation scenarios for WorkMan. WorkMan can operate as a stand-alone, client application, or it can connect to WorkMan Server™ or other 3rd-party systems to synchronize the data you collect in WorkMan with other systems.

See them in action: Contact activeG for a personal demonstration at your company and see the benefits for yourself.

Contact

GLOBAL | Don Anderson | 480 610 0839
 ASIA/PACIFIC | Terry Boehm | +61 (3) 9934 0401
www.activeg.com
www.dotopen.com.au

System Requirements
 Windows 2000, XP
 Any GIS or spatial data system

Maximo is a trademark of IBM Corporation in the United States and/or other countries. Other names and brands may be claimed as the property of others.